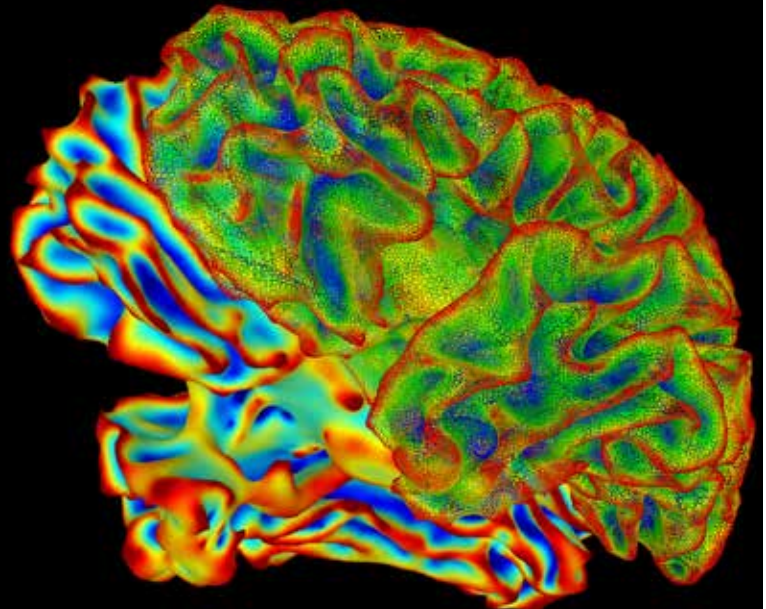


# Join us

**Topic:** Novel Therapeutics in Mood Disorders and Insights on Clinical Psychiatry Research



Please join us for a discussion on novel therapeutics in mood disorders, with a focus on ketamine and novel targets of the AMPA pathway for the treatment of mood disorders. Our own CLM co-chair Dr. Yavi will present on research from the NIMH experimental therapeutics and pathophysiology branch and discuss what it's like to be a clinical research fellow at the NIH.

The event will be moderated by CLM founder Dr. Eliot Sorel, and joined by Senior Investigator Dr. Park and Clinical Trial Specialist Yamila Carmona from the Zarate group as panelists for a Q&A session.

- **Keynote Speaker:** Mani Yavi, M.D.  
Clinical Research Fellow at NIMH
- **Moderator:** Eliot Sorel, M.D., CLM Founder  
GWU Psychiatry Professor
- **Panelist:** Lawrence Park, M.D., Senior Investigator  
NIMH
- **Panelist:** Yamila Carmona, MA, Clinical Psychology  
Research, NIMH

**APRIL 21ST**

**6:30 P.M. - 8:00 P.M.**

The event will be about 1.5 hours structured as:

Introduction: 10 minutes

Presentation: 30 minutes

Discussion: 40 minutes

**Advance registration not required. Use this log-in to access the event:**

<https://www.horizonvirtualvenue.com/wps-clm/>

Password: clm



**Washington  
Psychiatric Society**